



epct

Express Networking Solutions

Data Center

|Express Networking Solutions|



Plug and Play / Pre-Terminated / System Performance / High Density / Flexibility / Scalability /
Moved, Added, Changed (MAC) / Migration to 40G/100G

EPCT CORPORATION

Express Networking Solutions

Address	No. 219, Sec. 3, Dadu Road, Beitou District, Taipei City, 112, Taiwan (ROC)
Telephone	886-2-28588398
Fax	886-2-28587087
E-Mail	info@epct.com.tw
Web	www.epct.com.tw

epct
www.epct.com.tw



EPCT

Express Networking Solutions

Fast Lead Time

EPCT offer one week lead time for fiber patch cord, from order releasing to goods received by customers, you are free of stock pressure, get better cash flow.

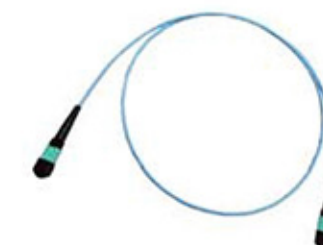
Competitive Price

Compare with same quality competitors, EPCT offer absolutely competitive prices to our customers.

Data Center

Plug and Play / Pre-Terminated / System Performance / High Density / Flexibility / Scalability / Moved, Added, Changed (MAC) / Migration to 40G/100G

» Multi-Fiber Series Products



24C MTP Array Cord



MTP Trunk Cable



MTP Y Cable



MTP to LC Harness

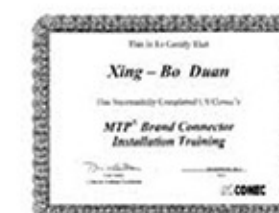


LC Break-out Cable



MTP to LC Direct Harness

	10G	40G	100G
Approach	10G	10G X 4	10G X 10
Max. Distance	OM3:300M (850nm) OM4:550M (850nm) SMF:10KM (1310nm)	OM3:100M (850nm) OM4:150M (850nm) SMF:10KM (1310nm)	OM3:100M (850nm) OM4:150M (850nm) SMF:10KM (1310nm)



» Premium MTP® Trunk Cable



Features

- Transmission performance is LOW LOSS
- Private ID serial number is on each cord
- Insertion loss and return loss are tested 100% each fiber
- Endface of each fiber is automated tested by EXFO 400 times Microscope
- Endface polishing quality is tested 100% by 3D interferometer
- Above tested reports are stored in CLOUD data center
- "Plug & Play" fiber solution eliminates in-field termination and fusion splice, reduces installation cost and time.
- Pre-terminated fulfills the innovation cabling system of Factory-Assembled, Factory-Tested.
- Ensure the cabling performance, components compatibility and quality consistent
- Small form factor connection of MTP® makes super high density easily
- Equipment can be moved, added, changed (MAC) wherever and whenever demanded
- Fiber types include OM3 and OM4 and G.657A2 bend-insensitive fiber

Transmission Performance

MTP® mated pair	50um OM3 BIF		50um OM4 BIF		9um OS2 G.657A.2	
	Regular	Premium	Regular	Premium	Regular	Premium
Insertion Loss (dB)	≤ 0.5	≤ 0.35	≤ 0.5	≤ 0.35	≤ 0.75	≤ 0.35
Return Loss (dB)	≥ 20	≥ 25	≥ 20	≥ 25	≥ 60	≥ 60

» Endface 400X Microscope Test Report by EXFO

ConnectorMax2Report

✓ Pass

Identifiers

Patch Cord ID	Fiber Type	Cable OD	Connector Type	Connector ID
20160223-00001	50125	3.0mm	MTP	A

TestParameters

Configuration:	IEC MM MF PC (61300-3-35, 1.0) (Standard)			
Connector type:	Multiple fiber	Cladding diameter:	125 μm	
Fiber type:	Multimode	Polishing type:	Physical contact	
Number of fibers:	12	Analysis mode:	Outside plant	

ResultsSummary

		1 (Focus level: Good)			
		Zones	Zones Diameter (μm)	Scratches	Defects
A: Core			0 - 65	✓	✓
B: Cladding			65 - 115	✓	✓

Results

1 (Focus level: Nominal)							
Zones	Zones Diameter (μm)	Scratches			Defects		
		Criteria (μm)	Thresholds	Count	Criteria (μm)	Thresholds	Count
A: Core	0 - 65	0 < size < 3	Any	0	0 < size < 5	4	0
		3 < size < ∞	0	0	5 < size < ∞	0	0
B: Cladding	65 - 115	0 < size < 5	Any	0	0 < size < 2	Any	0
		5 < size < ∞	0	0	2 < size < 5	5	0
					5 < size < ∞	0	0

3D Interferometer Endface QC Report by Norland

Endface QC Report		PASS
Product ID: Cable1 Connector ID: 20151216-00001B Scan Date: 12/16/2015 Scan Time: 3:34:28 PM System: AIM2020_MF		

» LC Trunk Cable - Extractor / Uniboot



Features

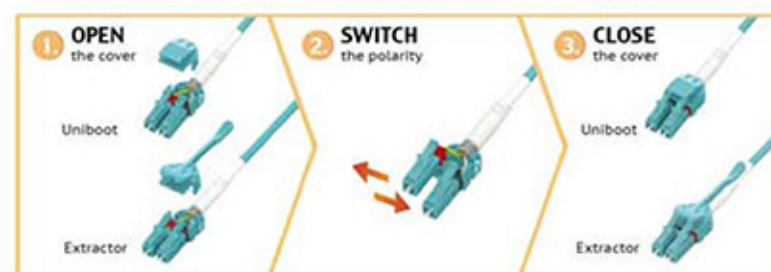
- Extractor - Seesaw tab design makes easily access and removal in high density fiber patching environment
- Polarity switchable design
- Red / Black color indication for polarity check
- Uniboot design with both of 2mm & 3mm round jacket

Transmission Performance

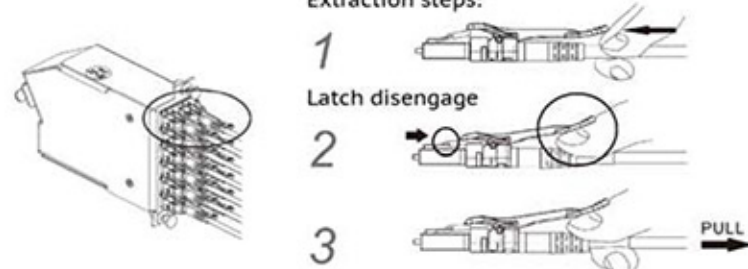
LC mated pair	50um 300M/10G OM3		50um 550M/10G OM4		9um Singlemode OS2	
	Regular Standard Performance	Premium Low-Loss Performance	Regular Standard Performance	Premium Low-Loss Performance	Regular Standard Performance	Premium Low-Loss Performance
Insertion Loss (dB)	≤ 0.3	≤ 0.15	≤ 0.3	≤ 0.15	≤ 0.2	≤ 0.1
Return Loss (dB)	≥ 35	≥ 40	≥ 35	≥ 40	≥ 55	≥ 55

Switch Polarity

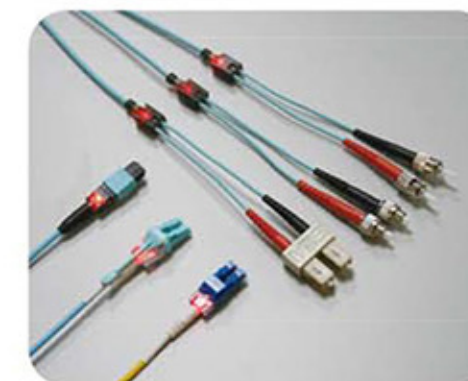
Uniboot / Extractor LC design allows the fiber polarity switch from straight through to crossover.



Extraction steps:



» Owl-Eyed Identification System



Tester Battery 4 pcs, A76 1.5V (LR44)

Transmission Performance

LC mated pair	50um 300M/10G OM3		50um 550M/10G OM4		9um Singlemode OS2	
	Regular Standard Performance	Premium Low-Loss Performance	Regular Standard Performance	Premium Low-Loss Performance	Regular Standard Performance	Premium Low-Loss Performance
Insertion Loss (dB)	≤ 0.3	≤ 0.15	≤ 0.3	≤ 0.15	≤ 0.2	≤ 0.1
Return Loss (dB)	≥ 35	≥ 40	≥ 35	≥ 40	≥ 55	≥ 55

Features

- Easily identify the termination point to the other
- Make trouble shooting easier
- Visually trace individual patch cord without pulling or affecting the patch cord
- LC Seesaw tab design makes easily access and removal in high density fiber patching environment
- Polarity switchable design in SC and LC
- Red / Black color indication for polarity check

Switch Polarity

Uniboot / Extractor LC design allows the fiber polarity switch from straight through to crossover.



» Multi-Function HD Fiber Patch Panel

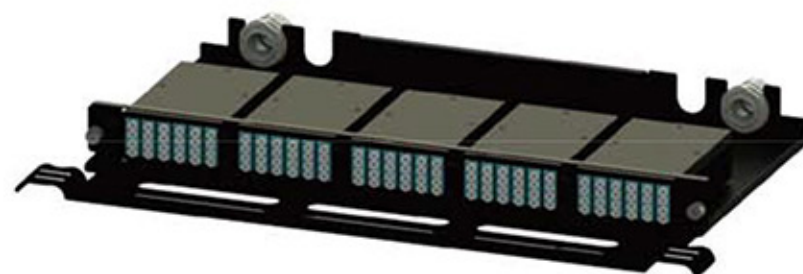
Multi-Function high density fiber patch panel is constructed by flexible design to achieve diversified applications, like in-field fiber termination, pre-termination fiber cassette and RJ45 keystone termination. The maximum port number of 1U multi-function fiber patch panel is up to 120 ports.



In-field termination patch panel



Pre-termination cassette panel



HD bulk-head



40G/100G Cassette



10G/40G Cassette



Fiber Adaptor Panel



RJ45 Feed-Thru



Blank Panel

Features

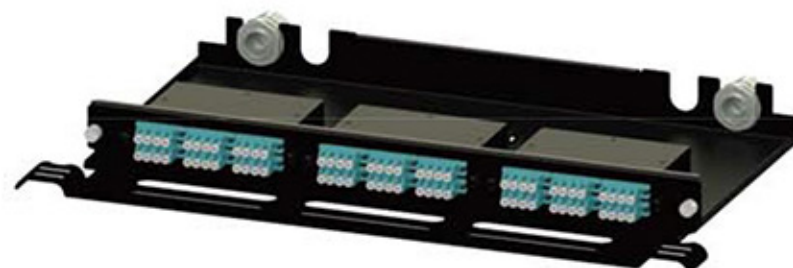
- Total solution of HD fiber patch panel for in-field termination, pre-termination fiber cassette and RJ45 snap-in keystone plate
- Max. 120-fiber (5 x HD-Cassette) in 1U 19" patch panel
- Polarity ready in Method A, B, C and Specific wiring
- Full front access, easy for maintenance
- Cassette can be moved, added, changed (MAC) wherever and whenever demanded
- Pre-terminated fulfills the innovation cabling system of factory-assembled and factory-tested
- Plug and Play eliminates in-field termination and fusion splice, reduces installation cost and time
- Optional front cable management bar

» Multi-Function LGX Fiber Patch Panel

Multi-Function LGX fiber patch panel is constructed by flexible design to achieve diversified applications, like in-field fiber termination, pre-termination fiber cassette and RJ45 keystone termination. The panel accepts LGX cutout fiber adaptor plate, fiber cassette and even LGX 6 port RJ45 keystone jack plate.



In-field termination patch panel



Pre-termination cassette panel

LGX bulk-head



10G/40G Cassette



Fiber Adaptor Panel



RJ45 Feed-Thru



Blank Panel

Features

- Total solution for in-field termination, pre-termination fiber cassette and RJ45 snap-in keystone plate
- Max. 72-fiber (3 x LGX-Cassette) in 1U 19" patch panel
- Polarity ready in Method A, B, C and Specific wiring
- Full front access, easy for maintenance
- Cassette can be moved, added, changed (MAC) wherever and whenever demanded
- Pre-terminated fulfills the innovation cabling system of factory-assembled and factory-tested
- Plug and Play eliminates in-field termination and fusion splice, reduces installation cost and time
- Optional front cable management bar

» Bi-Direction Sliding Fiber Enclosure

Bi-Direction sliding fiber enclosure can be shut off with hinged front door and rear cover after termination, so it is away from dusts and prevents disconnection by careless touch, more secured and compact construction.



LGX bulk-head



10G/40G Cassette



Fiber Adaptor Panel



RJ45 Feed-Thru



Blank Panel

Features

- Total solution for in-field termination, Pre-termination fiber cassette and RJ45 snap-in keystone plate
- Max. 72-fiber (3 x LGX-Cassette) in 1U 19" patch panel
- Max. 144-fiber (6 x LGX-Cassette) in 2U 19" patch panel
- Cassette Polarity ready in Method A, B, C and Specific wiring
- Enclosure design keep the dust away
- Full front access, easy for maintenance
- Both side sliding-out tray – ease of installation maintenance
- Cassette can be moved, added, changed (MAC) wherever and whenever demanded
- Pre-terminated fulfills the innovation cabling system of factory-assembled and factory-tested
- Plug and Play eliminates in-field termination and fusion splice, reduces installation cost and time

» Premium Copper Trunk Assembly



Features

- Private ID serial number is on each trunk cable
- Fluke tested 100% each cord
- 100% CCD inspection is on each crimped plug
- The recessed depth of crimped contact blade for each crimped plug meets FCC part 68 and IEC 60603-7 standard
- Fluke tested report and CCD measured result are stored in CLOUD data center

Application

Category	Premium C6 Patch Cord		Premium C6A Patch Cord	
Cabling System	UTP	STP	UTP	STP
Solution	U/UTP patch cord	S/FTP patch cord	U/FTP patch cord	S/FTP patch cord

C6A 6-piece bundled Plug to Plug

Directly connect to active equipment, or open-space work area. Use the standard patch cord is more cost efficiency solution.



C6A 6-port bundled Keystone Jack to Plug

Require to work with snap-in patch panel on one end and directly patch into active equipment in the other.



C6A 6-port bundled Jack to Jack

Require to work with snap-in patch panel on each end, cross connect can reduce the potential of trouble in expensive active equipment.



C6A 6-port bundled Keystone Jack to Open

Connect to the snap-in patch panel on one end, the other end would be connect to a modular patch panel. After cable termination, field testing is necessary.



» Premium Copper Extractor Patch Cord



Features

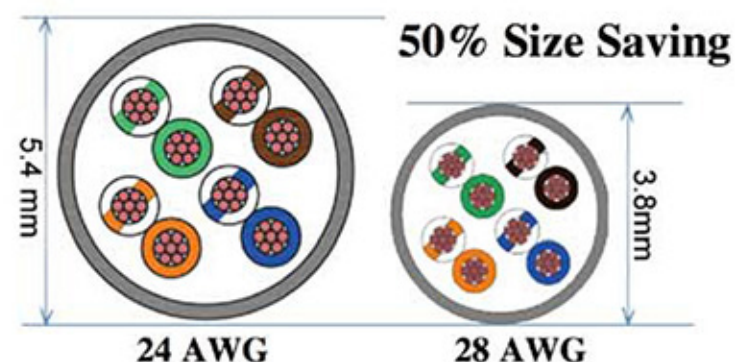
- Seesaw tab design makes easy access and removal in high density patching environment
- Private ID serial number is on each trunk cable
- Fluke tested 100% each cord
- 100% CCD inspection is on each crimped plug
- The recessed depth of crimped contact blade for each crimped plug meets FCC part 68 and IEC 60603-7 standard
- Fluke tested report and CCD measured result are stored in CLOUD data center

Application

Category	Premium C6 Patch Cord		Premium C6A Patch Cord	
Cabling System	UTP	STP	UTP	STP
Solution	U/UTP patch cord	S/FTP patch cord	U/FTP patch cord	S/FTP patch cord



» 28AWG C6 Patch Cord



Features

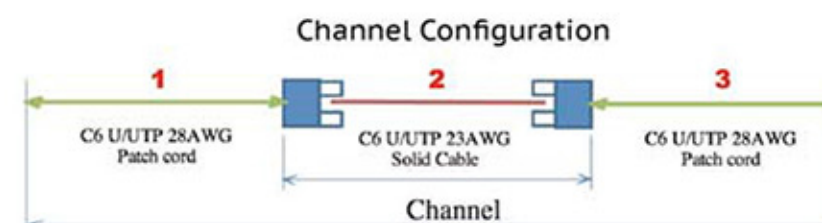
- 28AWG C6 patch cord exceeds all patch cord electrical performance to its limit.
- 28AWG patch cord occupies less than ½ the space of common used patch cords. This enables simplified cable management and improve airflow, reducing pathway fill and operation cost.
- 28AWG patch cord improves the flexibility of MAC – move, add and change.
- 28AWG patch cord is much softer than common used patch cord. It provides tighter bend radius to reach ultimate flexibility in cable routing, dressing and management.

Limitation

- If running PoE or PoE+ applications, bundle size is limited due to heat dissipation.
- Small diameter wire results higher attenuation, the total channel length is achieved by 90 percent to typical channel. Table as below.

28AWG Patch Cord for PoE/PoE+ Application

PSE 55V/30W		C6U/UTP 28AWG Patch Cord Max.Length(meter)	PD802.3			
				Voltage	Output Load	
Output at PSE (dc)	54.9	30	Input at PD(dc)	51.1	n/a	
			Dropping(dc)	12	n/a	
			Output at PD(dc)	3.8	2A	6ohm



Transmission Performance

Item	C6 U/UTP 28AWG Patch Cord (1)	C6 U/UTP 23AWG Solid Cable (2)	C6 U/UTP 28AWG Patch Cord (3)	Channel Total Length	Channel Test
1	4.6M (15 FT)	89.5M (293.6 FT)	4.6M (15 FT)	98.7M (323.8 FT)	PASS
2	30.5M (100 FT)	36M (118 FT)	4.6M (15 FT)	71.1M (233 FT)	PASS
3	46M (150 FT)	10M (32.8 FT)	4.6M (15 FT)	60.6M (198 FT)	PASS

» Foldable Angled Keystone Panel



Features

- Divert the cables to two separate directions, makes cable management more efficient
- Minimizes patch cord bend radius to the rack
- Keep rack space by routing patch cords directly into vertical cable management
- Providing a higher density connectivity fill into cabinets and racks
- Spectacular design at V hinged angled keystone panel and foldable cable support bar to save 60% room for stock, package and transportation
- Front panel is optional with solid steel or plastic panel

Foldable Angled keystone panel



Foldable cable management bar



60% Space Saving in Package!

» Foldable Flat Keystone Panel



Features

- Providing a higher density connectivity fill into cabinets and racks
- Spectacular design at foldable flat keystone panel and foldable cable support bar to save 60% room for stock, package and transportation
- Front panel is with solid steel

Foldable flat keystone panel



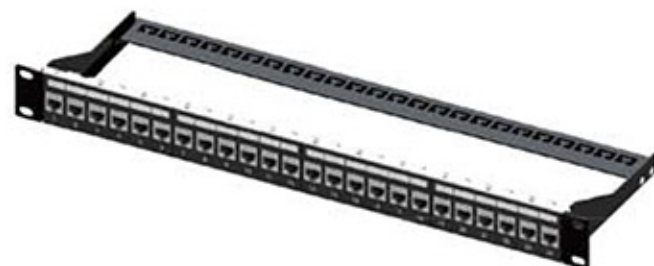
Foldable cable management bar



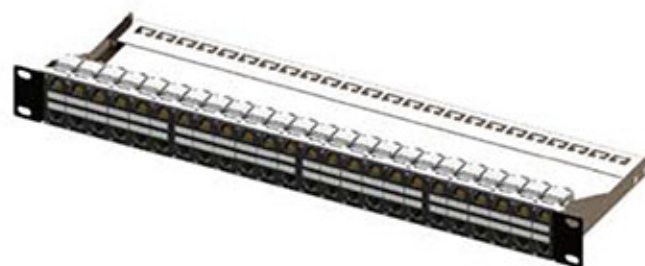
60% Space Saving in Package!

» High Density Snap-In Patch Panel

1U-24Port Keystone Panel



1U-48Port Keystone Panel



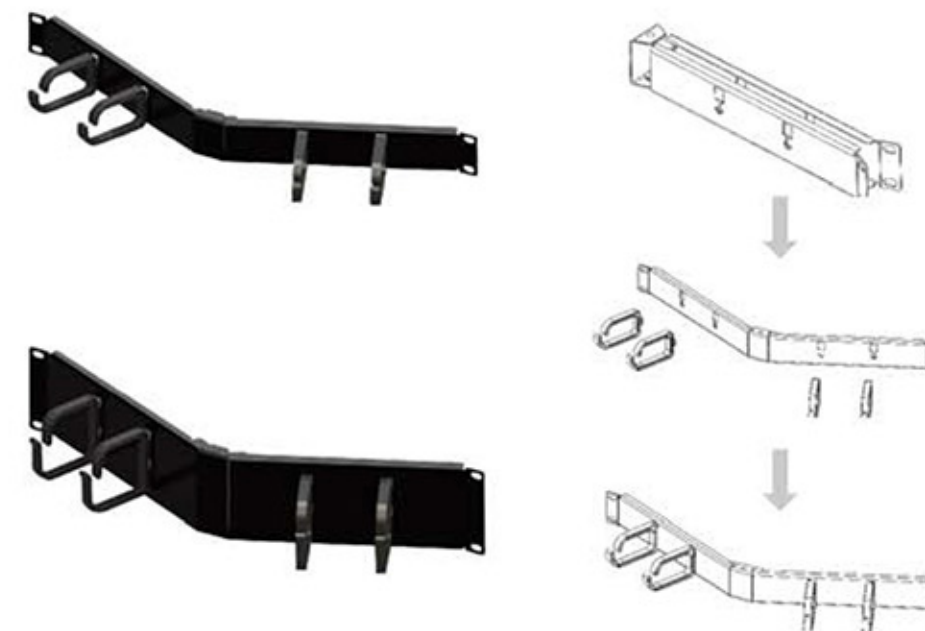
0.5U-24Port Keystone Panel



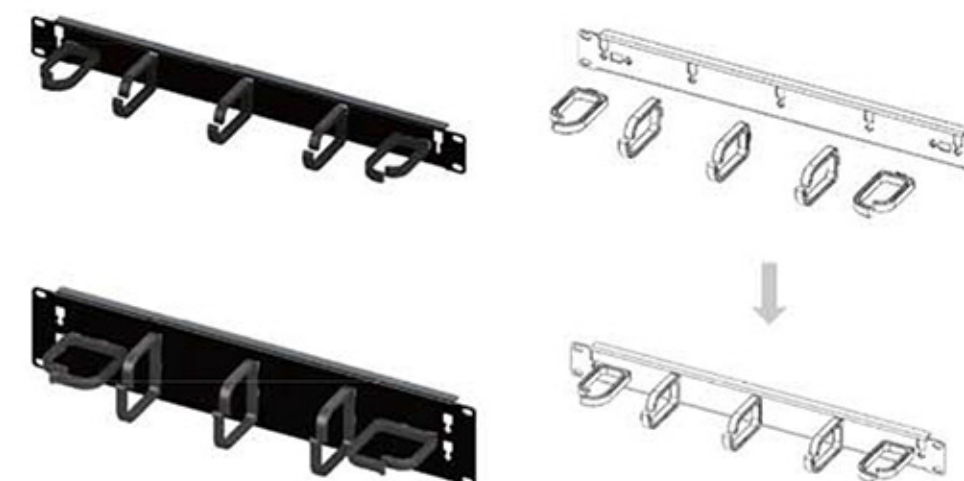
Features

- 2 Depth of cable management - 90mm / 153mm for choice
- Both of UTP and FTP solution are available
- Cable management bar available as optional part
- Recommended keystone jack type for 1U48Port and 0.5U-24Port - KJ28, KJ28F, KJ32, KJ32F, KJ36, KJ38

» Hinged Angled Cable Management



» Flat Cable Management



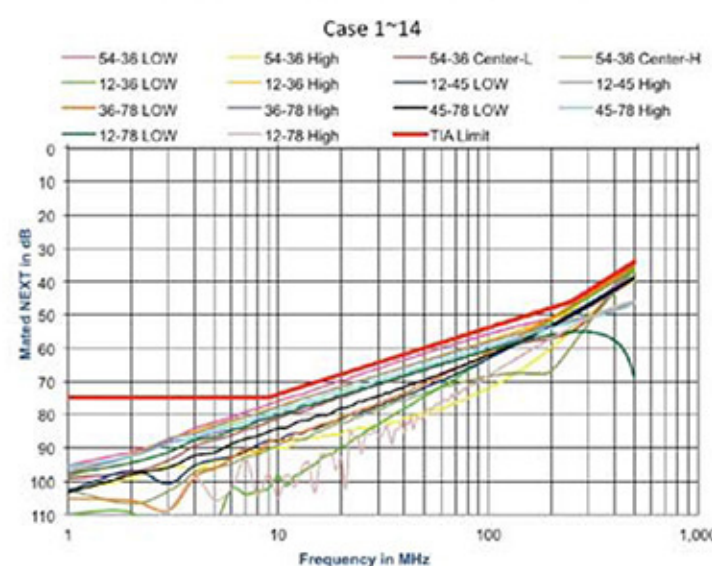
» C6A Tool Free Keystone Jack - KJ32F



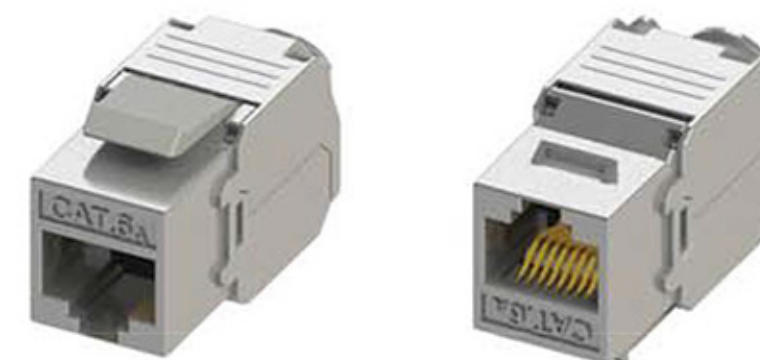
Features

- ETL verified C6A Components Performance
- Terminating 23-26 AWG wiring cable
- High frequency transmission design - Patented design
- Contact-supporter design - Patented design
- Cat.6 UTP / FTP performance are also available
- Fits 1U 24Port / 1U 48Port / 0.5U 24Port Keystone Patch Panel

Cat.6A Components Performance



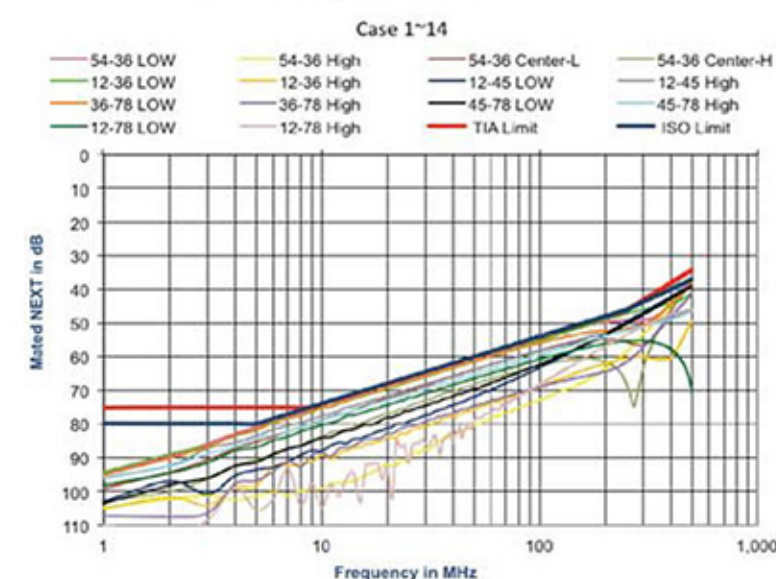
» C6A Tool Free Keystone Jack - KJ28F



Features

- Delta verified C6A/Cat.6 Components with PoE Plus
- 3P verified C6A Components Performance
- Terminating 22-26 AWG wiring cable
- Dual Function - punch down and toolless installation - Patented design
- High frequency transmission design - Patented design
- Contact-supporter design - Patented design
- Cat.6 UTP / FTP performance are also available
- Fits 1U 24Port / 1U 48Port / 0.5U 24Port Keystone Patch Panel

Cat.6A Components Performance



Power over Ethernet Plus



